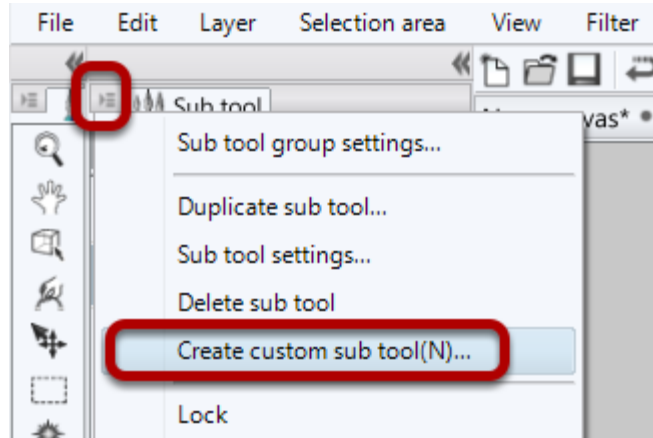


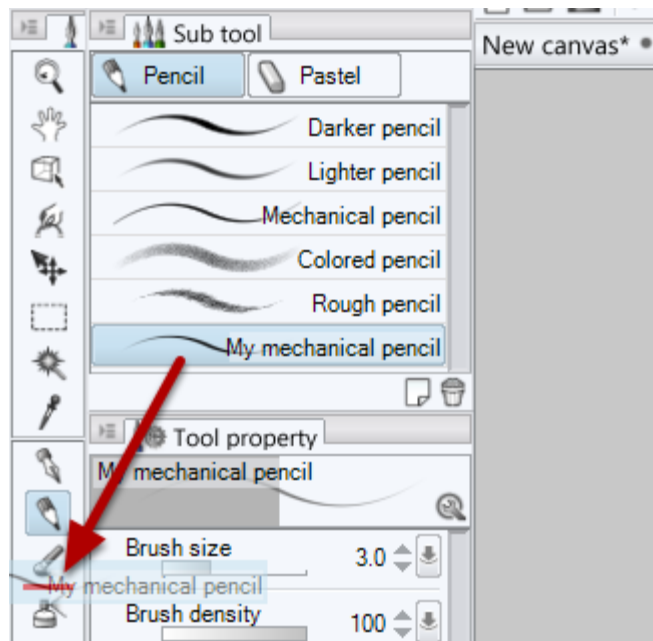
## Manga Studio 5: adding tool to toolbar and new tab in sub-tools

### Create a new sub-tool



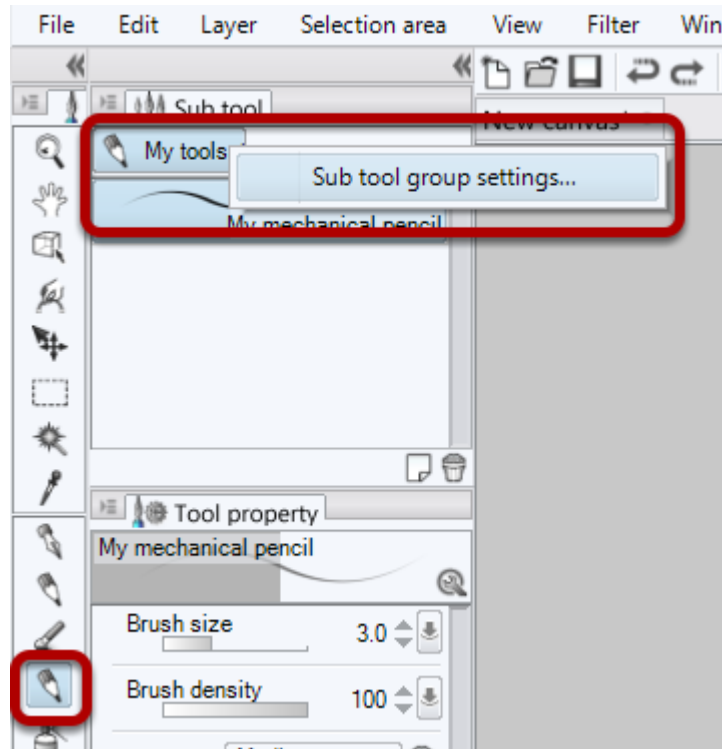
Create a new sub-tool in the usual way (or alternatively, import the sub-tool).

### Drag the sub-tool onto the toolbar



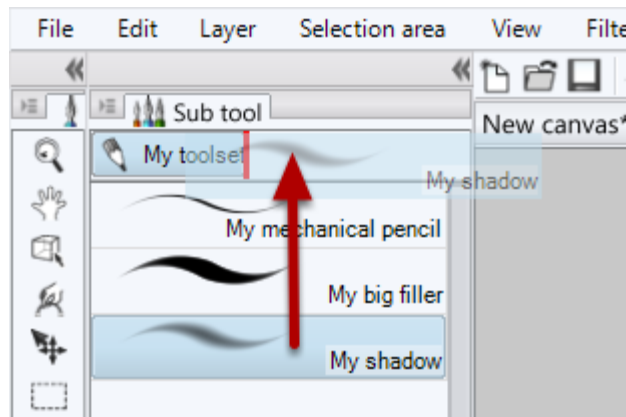
If you drag the sub-tool between the tool icons on the toolbar, you will see a red line and the sub-tool will be created as a new tool. If you drag it onto an existing tool icon, you will see a red square around the tool icon and the sub-tool will be moved into that tool as an additional sub-tool of that existing tool. The icon on the toolbar will be that of the current sub-tool.

## Rename the sub-tool tab (optional)



If you **right-click** on the sub-tools tab and click on the pop-up **Sub tool group settings...**, and you will be able to rename the tab. This does not change the tooltip for the tool.

## Creating another sub-tool tab



You can create another tab of sub-tools by dragging an existing sub-tool up into the blank tab area. A red line will indicate where the tab will be created.